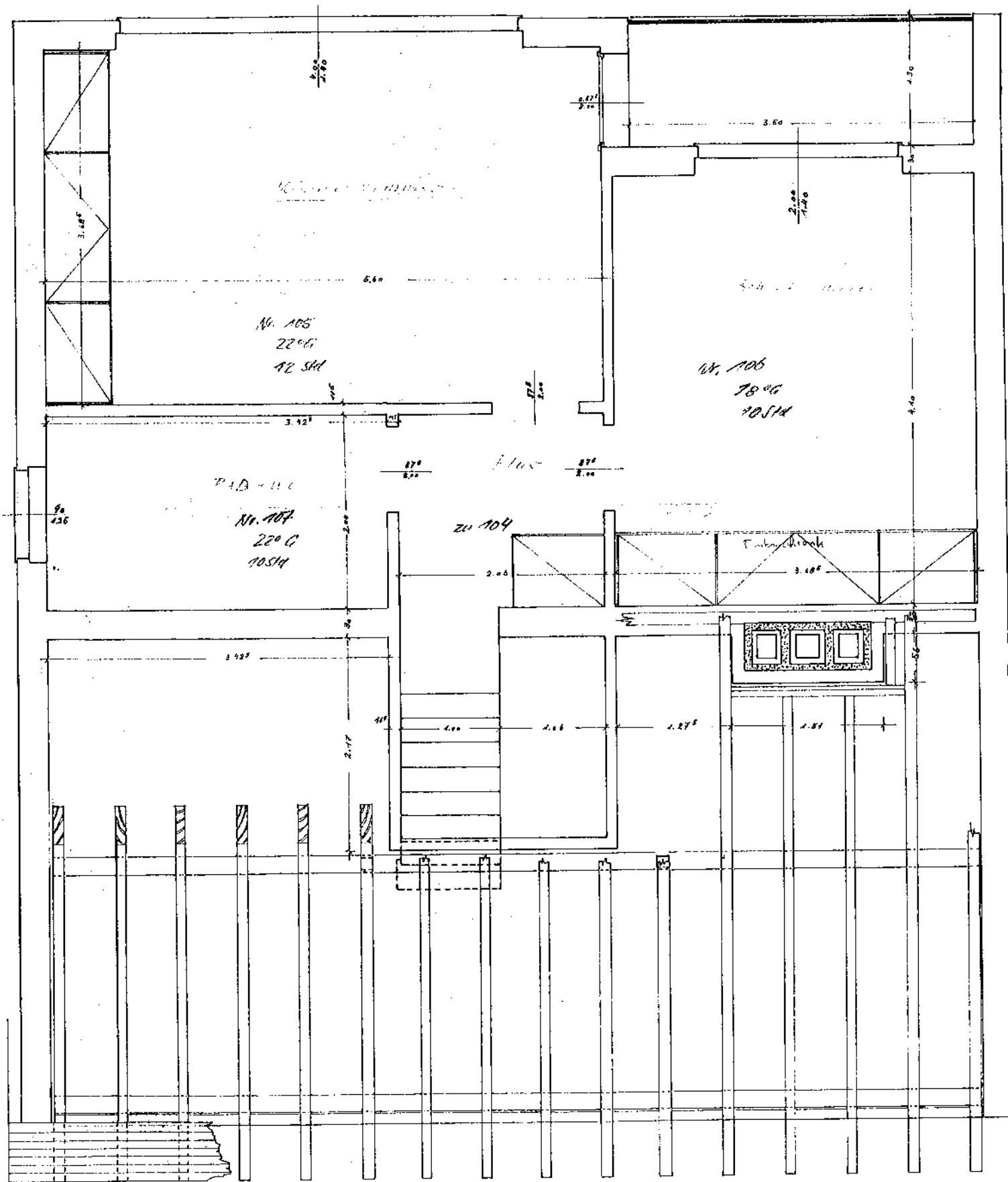
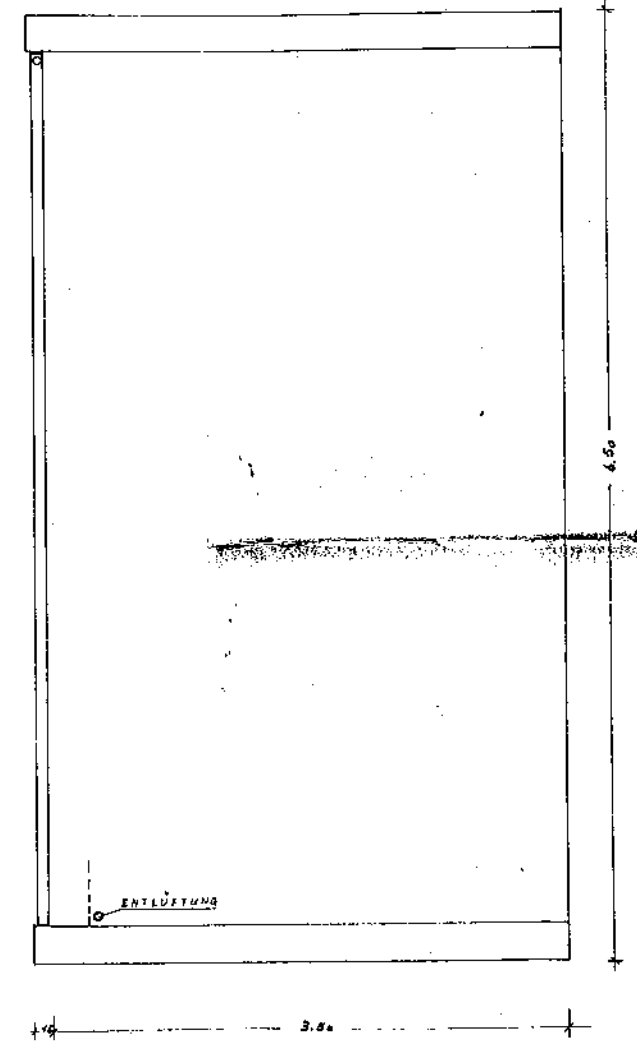


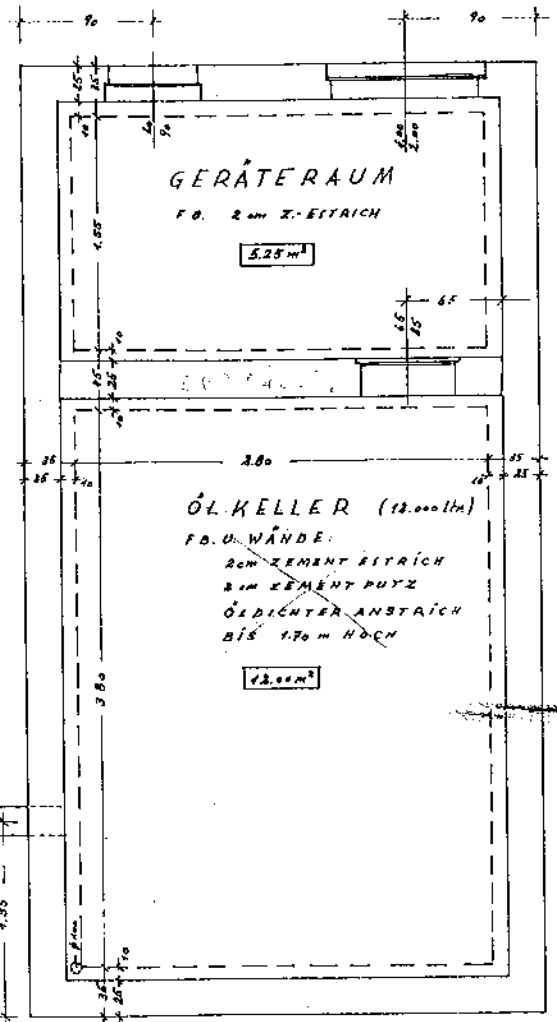
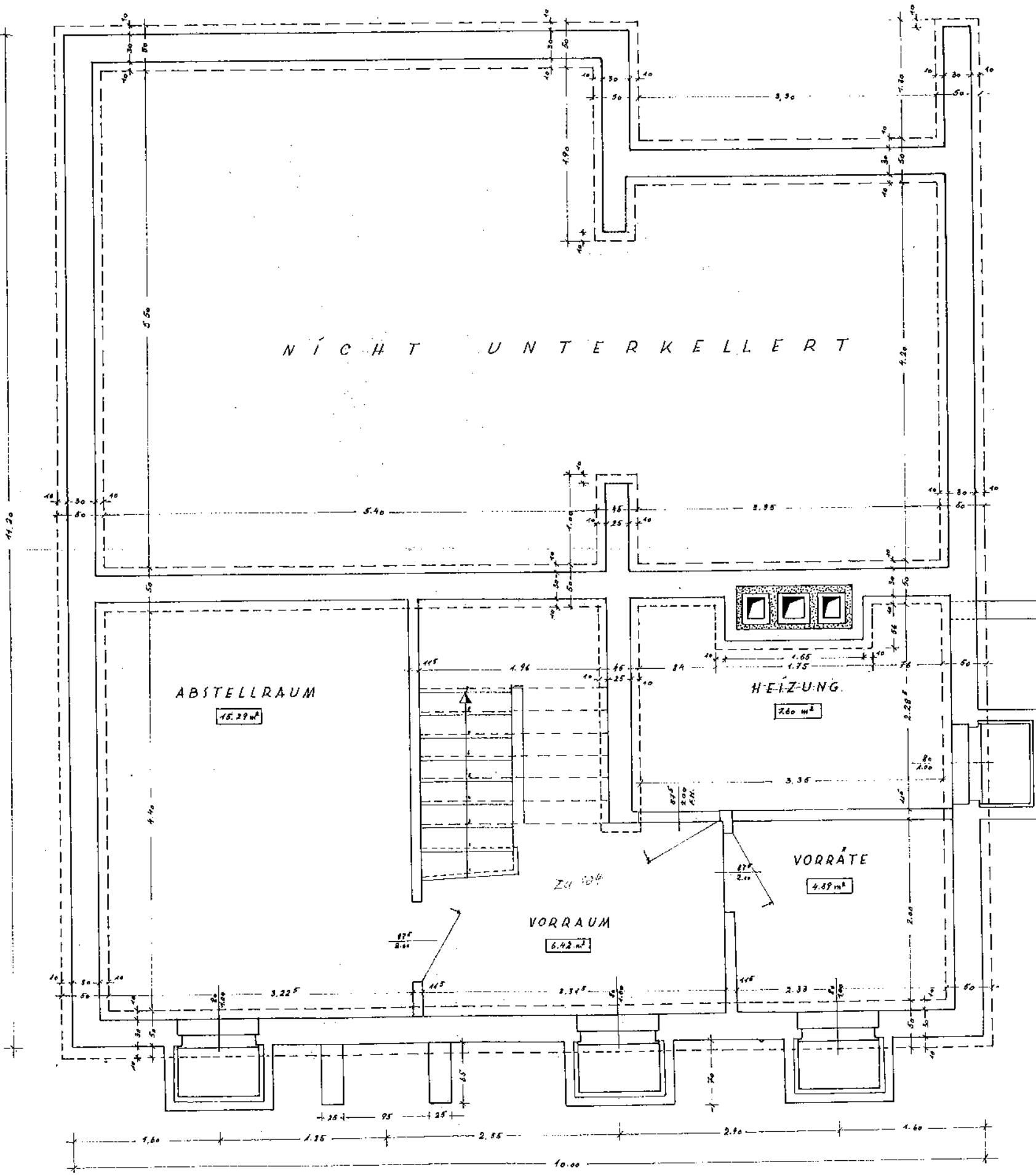
2.10.1951
 1.10.1951
 CHRISTIAN PIEHL
 BAUMEISTER R. D. B.
 61 DARMSTADT
 SODERSTRASSE 29



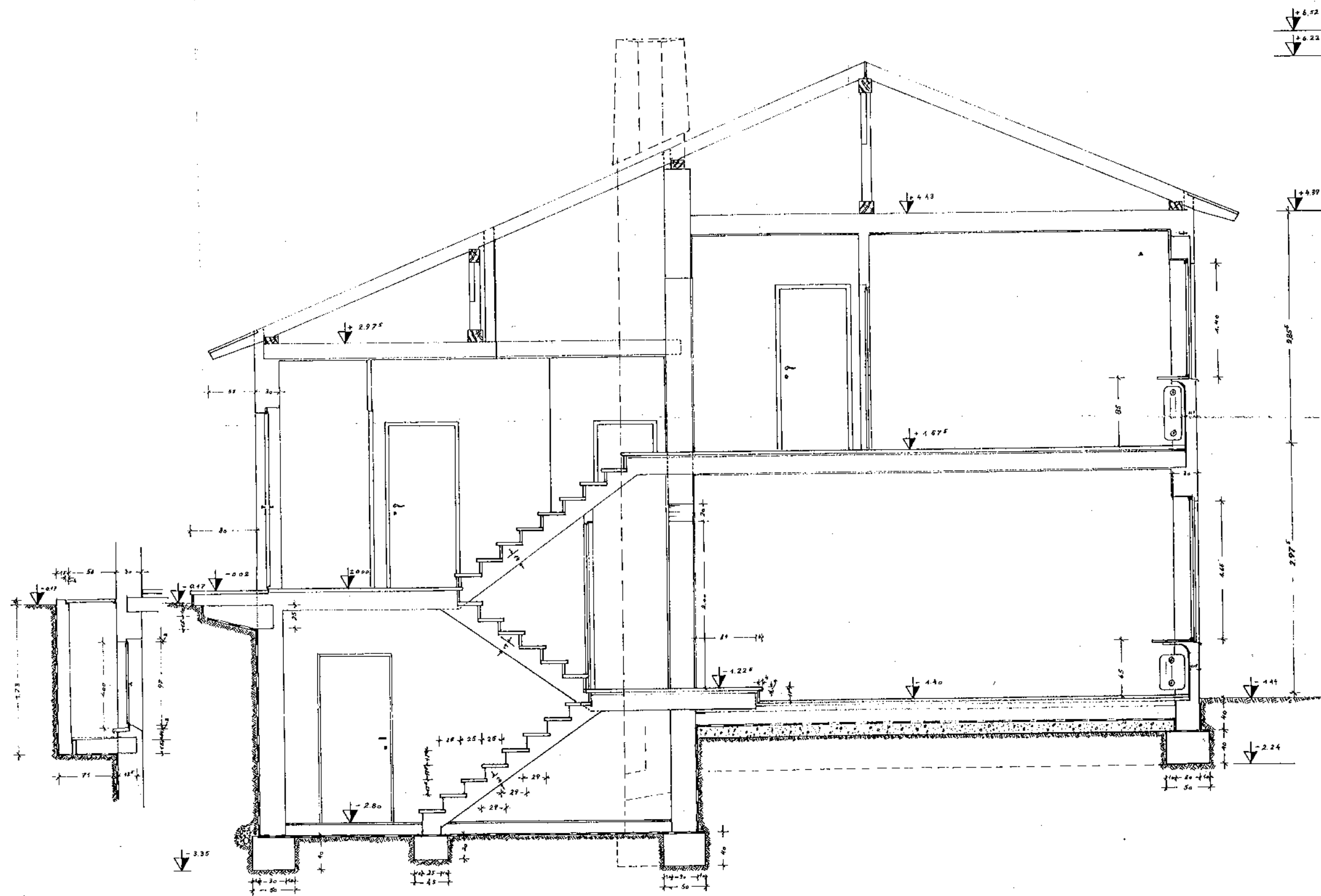
BÄLKENKÖPFE GEHOBELT, DARAUFLIEGENDE FEDERBREITER 4/2 cm. EINZELN



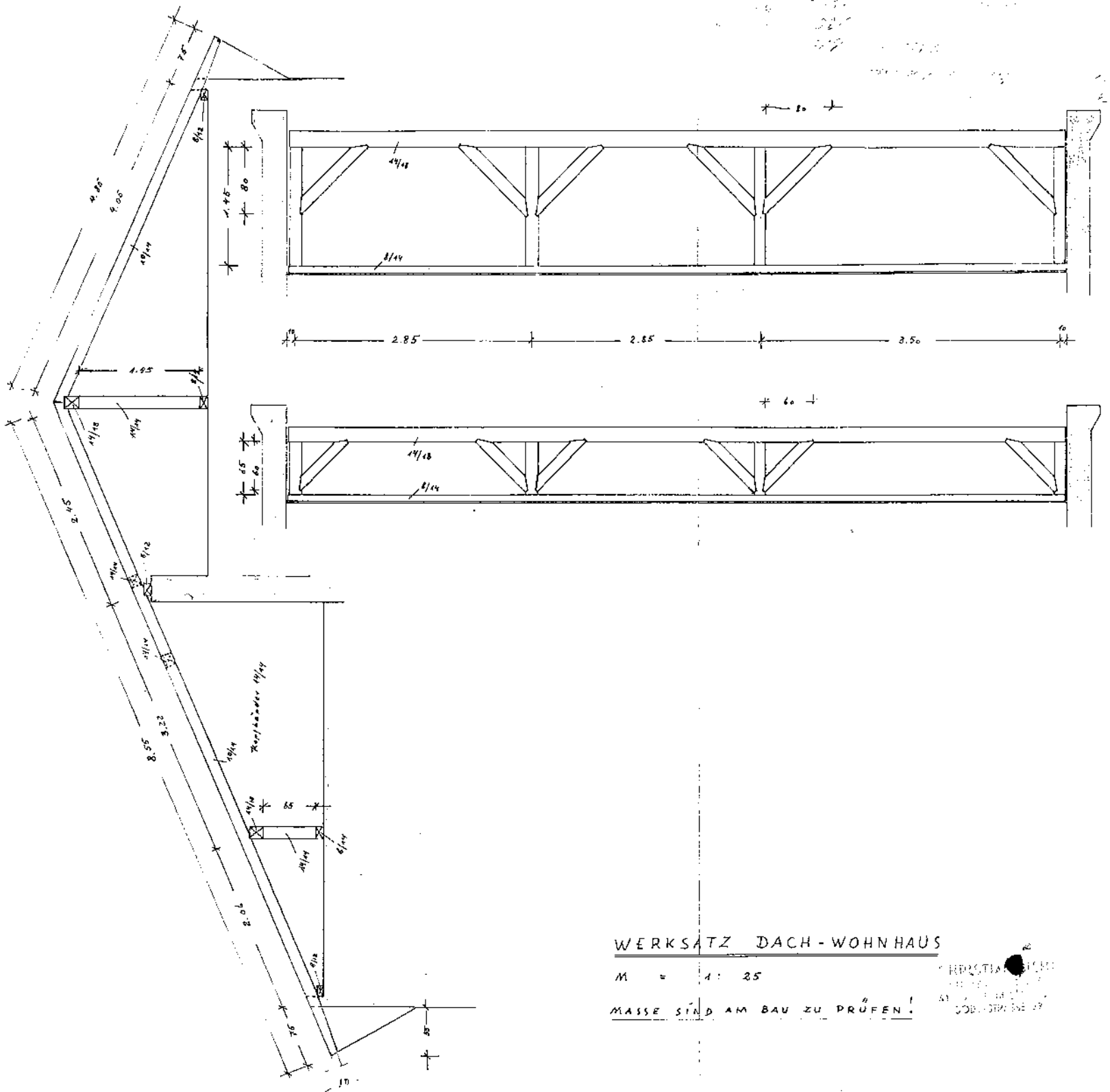
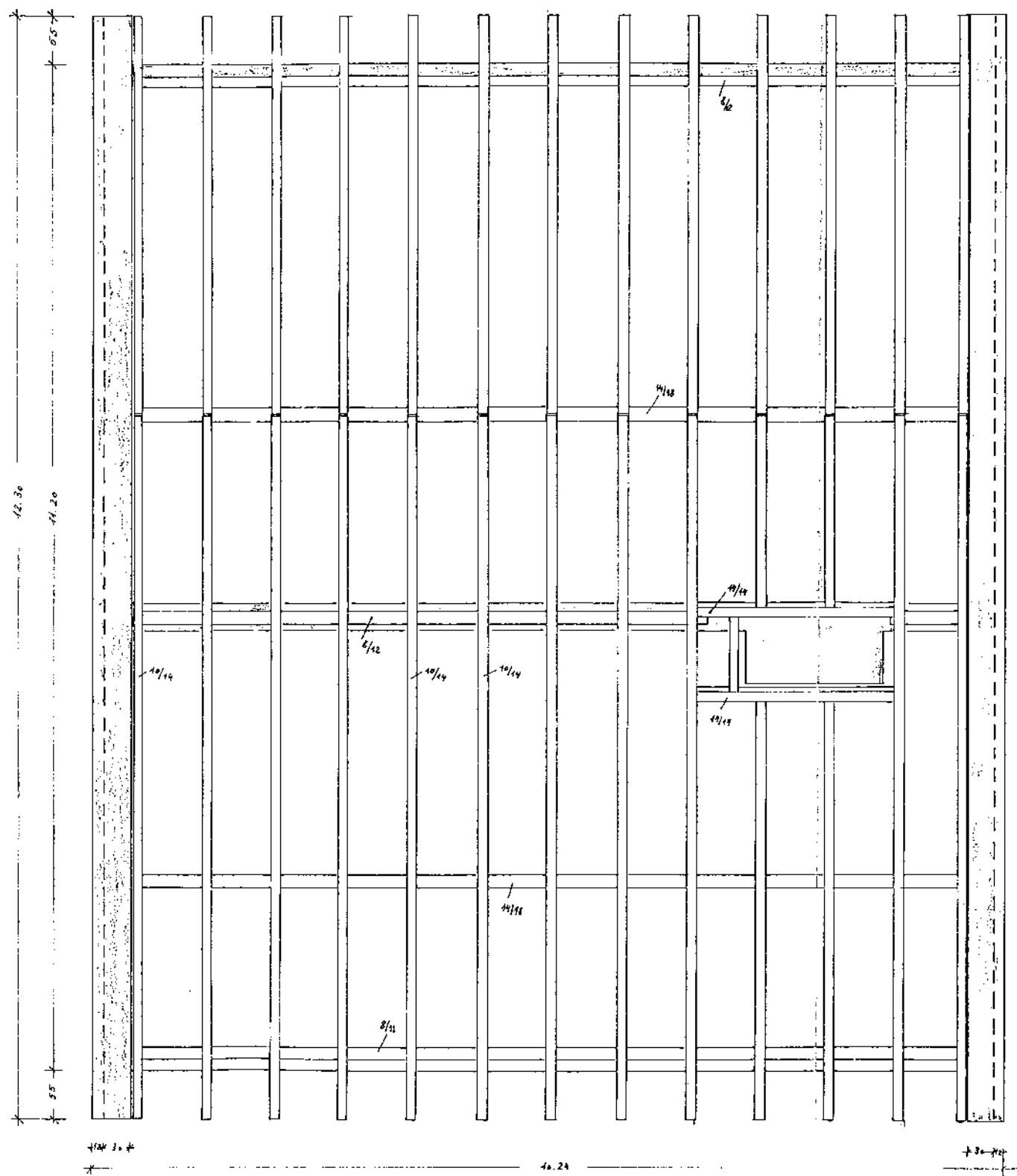
Chargeschluss
CHRISTIAN PIEHL
 BAUMEISTER B. D. B.
 61 DARMSTADT
 SÖDERSTRASSE 29



Kelles
CHRISTIAN PIEHL
 BAUMEISTER
 61 DARMSTADT
 SOBERSTRASSE 29



Schnitt
CHRISTIAN PIEHL
 BAUMEISTER B. D. U.
 61 D A R M S T A D T
 S O D E R S T R A S S E 29



WERKSATZ DACH-WOHNHAUS

M = 1:25

MASSE SIND AM BAU ZU PRÜFEN!

HERSTELLUNG
 1917
 1918
 1919
 1920
 1921
 1922
 1923
 1924
 1925
 1926
 1927
 1928
 1929
 1930
 1931
 1932
 1933
 1934
 1935
 1936
 1937
 1938
 1939
 1940
 1941
 1942
 1943
 1944
 1945
 1946
 1947
 1948
 1949
 1950
 1951
 1952
 1953
 1954
 1955
 1956
 1957
 1958
 1959
 1960
 1961
 1962
 1963
 1964
 1965
 1966
 1967
 1968
 1969
 1970
 1971
 1972
 1973
 1974
 1975
 1976
 1977
 1978
 1979
 1980
 1981
 1982
 1983
 1984
 1985
 1986
 1987
 1988
 1989
 1990
 1991
 1992
 1993
 1994
 1995
 1996
 1997
 1998
 1999
 2000